



# MASSIRONI KIT FOR PROSTHETIC BY HU-FRIEDY HOW TO DO?

## TNMASS1 & TNMASS2



### ENAMEL ROUNDED CHISEL MASSIRONI 1,2 mm & 1,5 mm

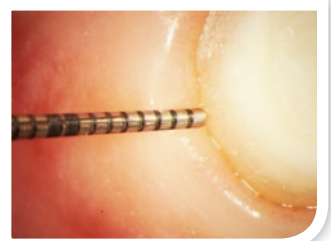
The two chisels are most often used in the finishing stages of the procedure and the **off-angle design** allows clinicians to access the restoration from any angle.

## PCORTLINI



### CORTELLINI, SINGLE END LASER PROBE, .5-15

Ideal for evaluation of minimum thicknesses in the prosthetic reduction of crowns and laminate veneers, and also for the use of silicone index.



## GCPYD1



### GINGIVAL CORD PACKER YARDLEY #1 HANDLE #41

Spatula for inserting rear deflection wires, also of large diameter, with different angle for optimal work over 360 degrees.

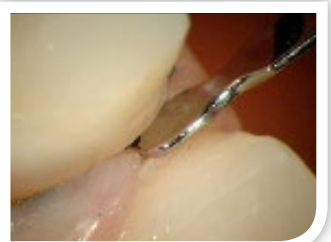


## GCPBN1



### GINGIVAL CORD PACKER #BN1 HANDLE #41

Spatula for inserting front deflection wires, small-medium diameter, with different angle for optimal work over 360 degrees.



## CVIPCKOT4



### CARVER KOTSCHY INTERPROXIMAL DOUBLE END #4

Multifunctional ultra-thin spatula, suitable for insertion in the deflection phase of thin silk-like threads and for managing the resin in the margin during the relining of the provisional.

